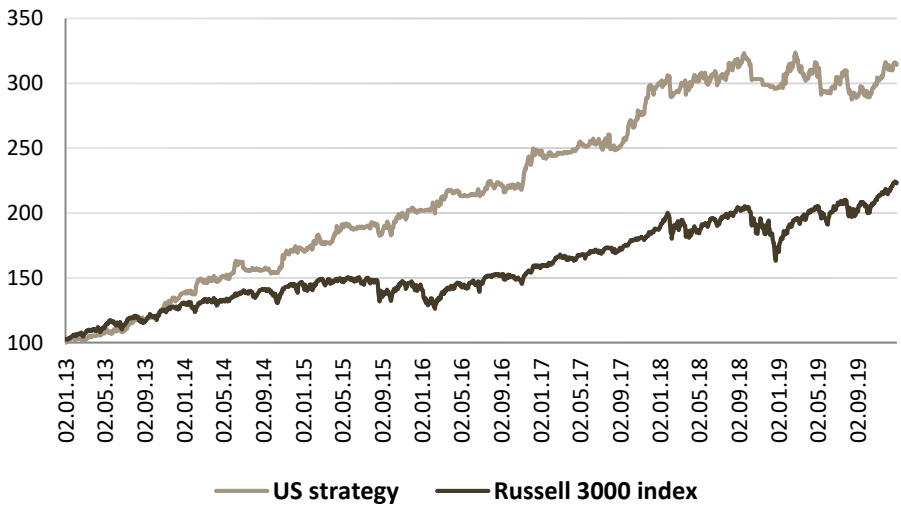


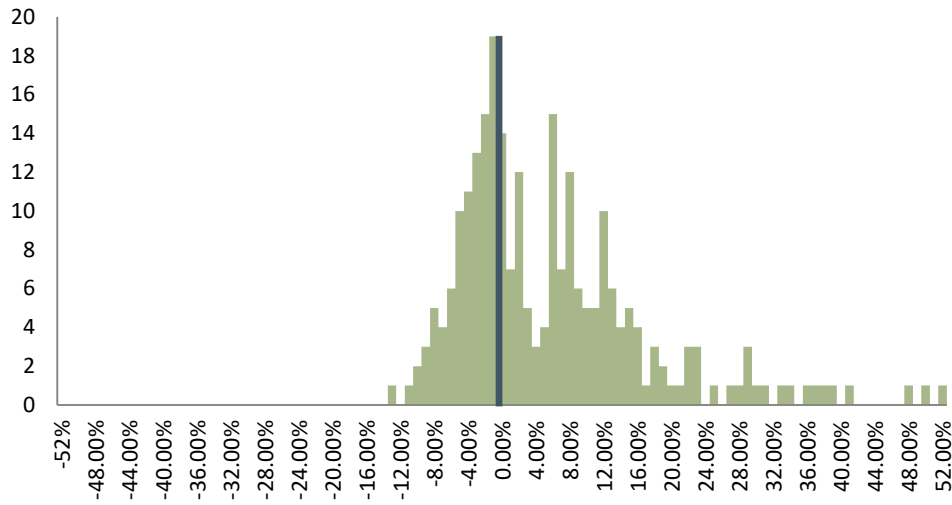
# **Transparent Knowledge**

# US strategy performance

## 100 USD invested dynamics



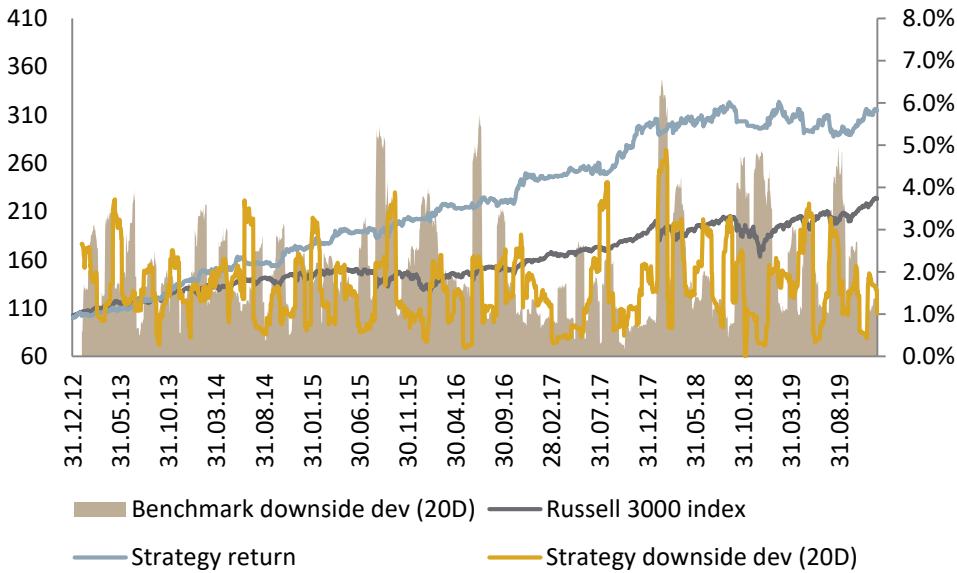
## Investment returns dispersion



## Annual returns

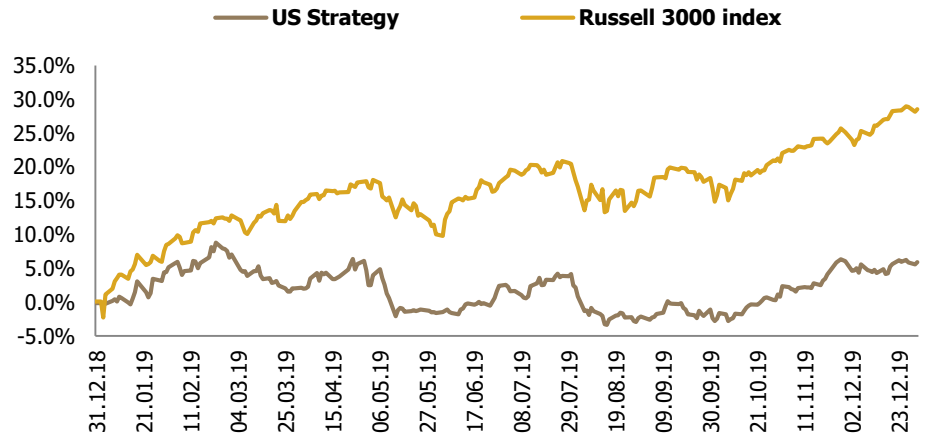
		Return	Jensen' $\alpha$	$\beta$	Sharpe ratio	Sortino ratio	Standard deviation ( $\delta$ )	Downside risk (dd)
2013	<b>US strategy</b>	<b>38.57%</b>	<b>21.11%</b>	<b>0.62</b>	<b>3.03</b>	<b>4.76</b>	<b>10.74%</b>	<b>7.29%</b>
	Russell 3000	27.69%			2.35	3.30	11.35%	8.09%
2014	<b>US strategy</b>	<b>23.71%</b>	<b>17.15%</b>	<b>0.59</b>	<b>1.94</b>	<b>3.14</b>	<b>10.95%</b>	<b>6.80%</b>
	Russell 3000	10.45%			0.81	1.08	11.70%	8.74%
2015	<b>US strategy</b>	<b>17.76%</b>	<b>17.87%</b>	<b>0.45</b>	<b>1.54</b>	<b>2.47</b>	<b>10.55%</b>	<b>6.72%</b>
	Russell 3000	-1.47%			-0.16	-0.23	15.32%	10.67%
2016	<b>US strategy</b>	<b>21.25%</b>	<b>16.18%</b>	<b>0.43</b>	<b>1.88</b>	<b>2.95</b>	<b>9.94%</b>	<b>6.82%</b>
	Russell 3000	10.42%			0.69	0.91	13.56%	10.37%
2017	<b>US strategy</b>	<b>22.19%</b>	<b>11.10%</b>	<b>0.56</b>	<b>2.26</b>	<b>3.05</b>	<b>9.38%</b>	<b>6.94%</b>
	Russell 3000	18.85%			2.53	3.46	7.06%	5.17%
2018	<b>US strategy</b>	<b>-0.53%</b>	<b>0.70%</b>	<b>0.34</b>	<b>-0.22</b>	<b>-0.25</b>	<b>10.40%</b>	<b>9.14%</b>
	Russell 3000	-6.99%			-0.52	-0.58	16.84%	13.71%
2019	<b>US strategy</b>	<b>5.91%</b>	<b>-9.75%</b>	<b>0.50</b>	<b>0.30</b>	<b>0.41</b>	<b>10.93%</b>	<b>7.90%</b>
	Russell 3000	28.54%			2.04	2.74	12.66%	10.06%

## Strategy risk performance vs benchmark



# US strategy FY2019 data

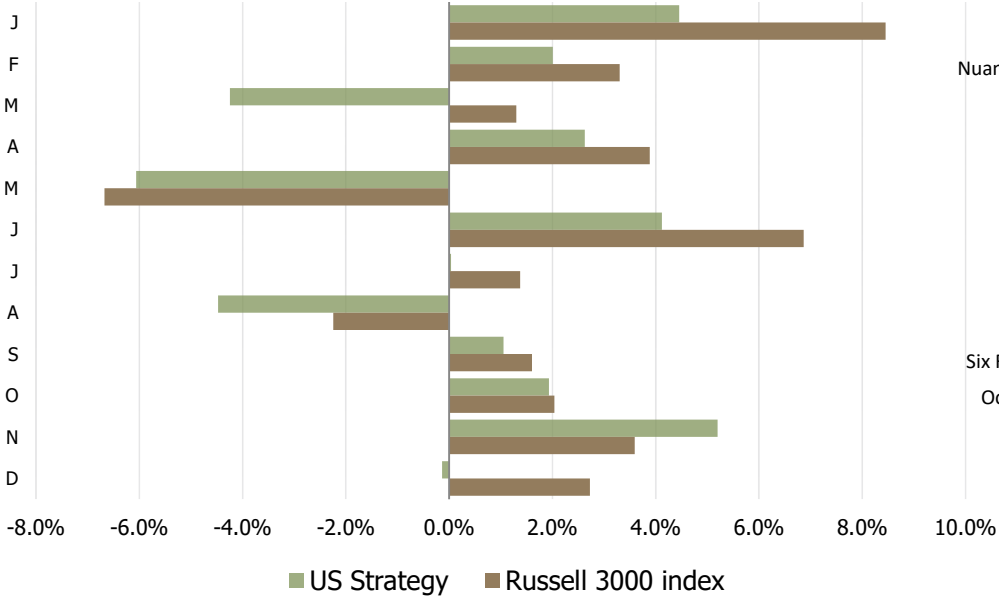
## YTD strategy performance vs benchmark



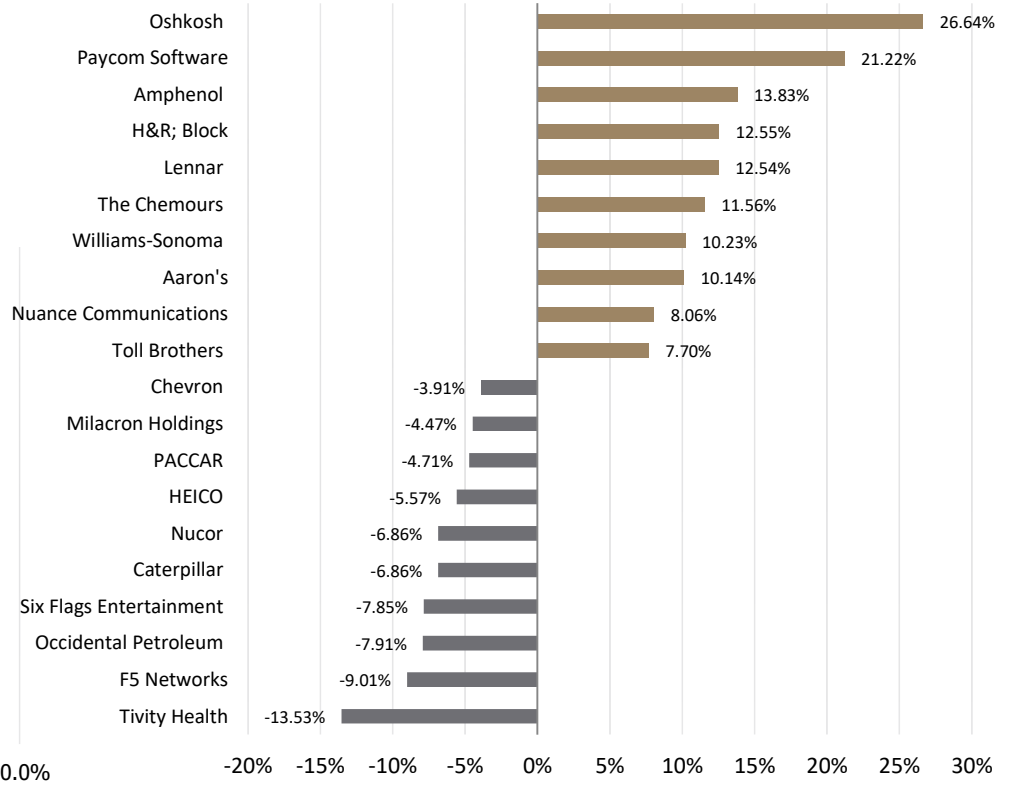
## Strategy indicators

	Return	Jensen' $\alpha$	$\beta$	Sharpe ratio	Sortino ratio	Standard deviation ( $\delta$ )	Downside risk (dd)
<b>US strategy</b>	5.91%	-9.75%	0.50	0.30	0.41	10.93%	7.90%
Russell 3000	28.54%			2.04	2.74	12.66%	10.06%

## Monthly performance



## 10 best & worst investments



## List of recommendations for 2019

Ticker	Name	Open date	Close/ valuation date	Days open	Return
ATSG	Air Transport Services	27.12.2018	04.03.2019	67	-2.1%
HUN	Huntsman	09.01.2019	19.03.2019	69	5.2%
CC	The Chemours	09.01.2019	28.03.2019	78	11.6%
SIX	Six Flags Entertainment	10.01.2019	20.02.2019	41	-7.9%
ZUMZ	Zumiez	10.01.2019	19.03.2019	68	6.1%
ALSN	Allison Transmission	11.01.2019	07.03.2019	55	-2.6%
DXC	DXC Tech	11.01.2019	08.03.2019	56	5.1%
DIS	The Walt Disney	14.01.2019	21.03.2019	66	-3.3%
AAN	Aaron's	14.01.2019	20.03.2019	65	10.1%
NJR	New Jersey Resources	22.02.2019	22.04.2019	59	-0.3%
ATVI	Activision Blizzard	22.03.2019	17.04.2019	26	-3.3%
PBH	Prestige Brands Holdings	26.03.2019	05.04.2019	10	-1.0%
DNR	Denbury Resources	01.04.2019	06.05.2019	35	-3.3%
TBI	TrueBlue	02.04.2019	13.05.2019	41	-0.9%
GNTX	Gentex	03.04.2019	16.05.2019	43	5.6%
FFIV	F5 Networks	05.04.2019	01.05.2019	26	-9.0%
HRB	H&R; Block	09.04.2019	22.07.2019	104	12.5%
MCRN	Milacron Holdings	15.04.2019	15.05.2019	30	-4.5%
ULH	Universal Logistics	16.04.2019	20.05.2019	34	-1.0%
BURL	Burlington Stores	18.04.2019	16.05.2019	28	-0.5%
TVTY	Tivity Health	24.04.2019	15.05.2019	21	-13.5%
WSM	Williams-Sonoma	05.06.2019	06.08.2019	62	10.2%
EXPE	Expedia	18.06.2019	02.08.2019	45	1.2%
BIIB	Biogen	20.06.2019	10.07.2019	20	-1.1%
SCHN	Schnitzer Steel Industries	21.06.2019	08.08.2019	48	2.2%
ALSN	Allison Transmission	25.06.2019	06.08.2019	42	-3.9%
CAT	Caterpillar	25.06.2019	02.08.2019	38	-6.9%
HFC	HollyFrontier	26.06.2019	15.08.2019	50	-1.3%
NUE	Nucor	26.06.2019	06.08.2019	41	-6.9%
OXY	Occidental Petroleum	17.07.2019	08.08.2019	22	-7.9%
EAT	Brinker International	26.07.2019	16.08.2019	21	-3.7%
AMPH	Amphastar Pharma	13.08.2019	23.09.2019	41	-2.0%
NUAN	Nuance Communications	13.08.2019	25.09.2019	43	-2.1%

Ticker	Name	Open date	Close/ valuation date	Days open	Return
NCLH	Norwegian Cruise Line	22.08.2019	01.10.2019	40	0.5%
TOL	Toll Brothers	09.09.2019	07.11.2019	59	7.7%
PCAR	PACCAR	12.09.2019	04.10.2019	22	-4.7%
BDC	Belden	13.09.2019	11.10.2019	28	-3.7%
BMI	Badger Meter	13.09.2019	04.10.2019	21	-1.4%
APH	Amphenol	17.09.2019	31.12.2019	105	13.8%
IT	Gartner	25.09.2019	20.12.2019	86	6.7%
OSK	Oshkosh	15.10.2019	31.12.2019	77	26.6%
ALXN	Alexion Pharmaceuticals	28.10.2019	20.12.2019	53	3.0%
CVX	Chevron	07.11.2019	29.11.2019	22	-3.9%
HSIC	Henry Schein	07.11.2019	26.11.2019	19	1.8%
PAYC	Paycom Software	08.11.2019	31.12.2019	53	21.2%
NUAN	Nuance Communications	08.11.2019	31.12.2019	53	8.1%
HEI	HEICO	18.11.2019	12.12.2019	24	-5.6%
XLNX	Xilinx	17.12.2019	31.12.2019	14	1.8%
PDCE	PDC Energy	18.12.2019	31.12.2019	13	5.6%
CSCO	Cisco Systems	24.12.2019	31.12.2019	7	0.4%
ATR	AptarGroup	26.12.2019	31.12.2019	5	0.7%