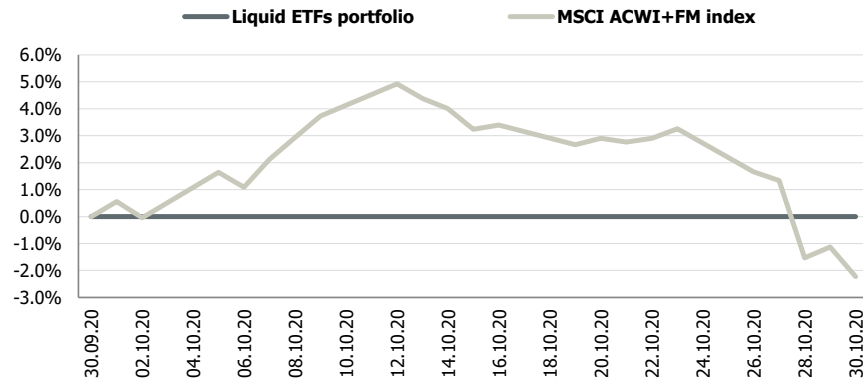


# Transparent Knowledge

**MTD portfolio performance vs benchmark**



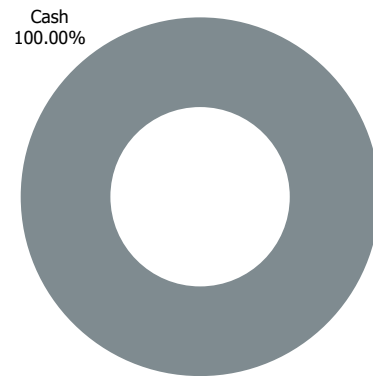
**Portfolio indicators**

	1 month	3 month	6 month	YTD	Since inception*
<b>Liquid ETFs portfolio</b>	0.0%	1.7%	15.0%	26.5%	12.7%
<b>MSCI ACWI+FM index</b>	-2.2%	0.2%	13.3%	-3.1%	6.0%
<b>Standard deviation (δ)</b>					
Portfolio	0.0%	3.4%	10.5%	11.7%	8.1%
Benchmark	4.6%	7.3%	12.1%	27.2%	14.0%
<b>Downside risk (dd)</b>					
Portfolio	0.0%	4.1%	9.7%	10.5%	6.3%
Benchmark	3.3%	5.6%	9.4%	24.7%	12.5%

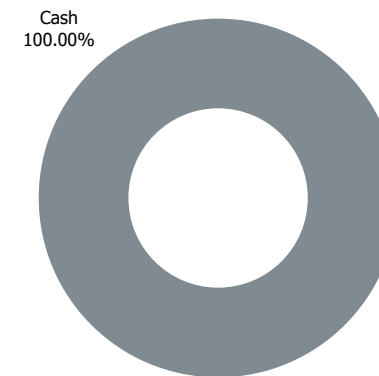
\*Annualised since 2013

**Portfolio structure**

30.09.2020

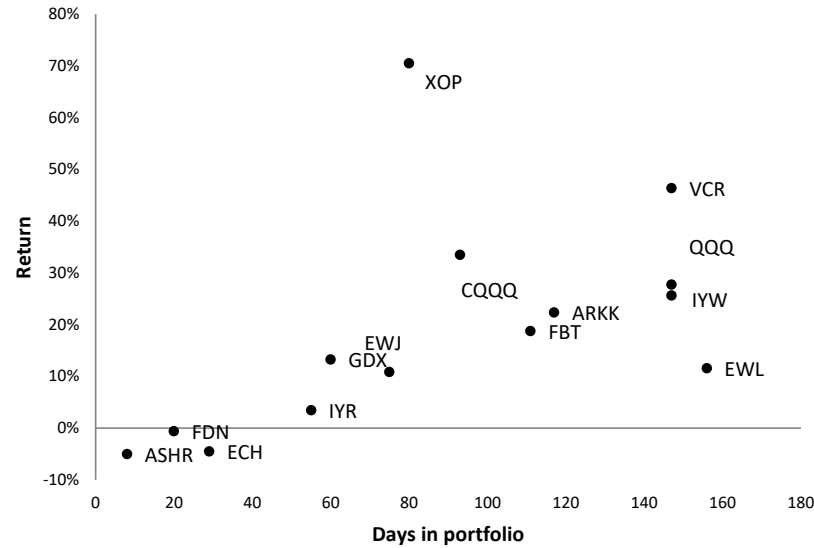


30.10.2020

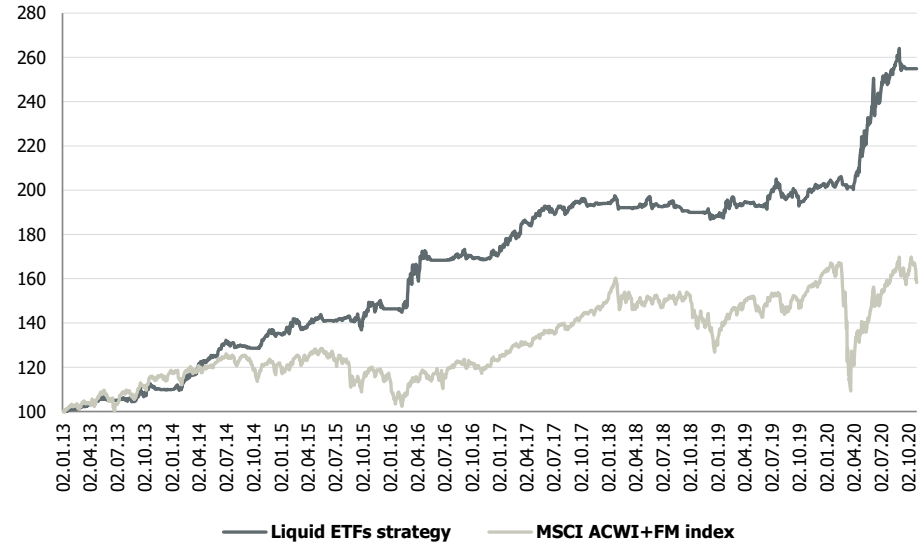


# Liquid ETFs strategy performance

## YTD positions statistics



## Portfolio performance since inception



## Monthly performance

	J	F	M	A	M	J	J	A	S	O	N	D	FY	Benchmark
2013	1.0%	0.5%	1.5%	2.3%	-0.3%	-0.1%	0.0%	-0.6%	2.1%	4.0%	-0.9%	0.0%	9.9%	18.6%
2014	0.7%	4.7%	3.6%	2.4%	1.5%	5.0%	-1.5%	0.5%	-0.8%	1.6%	4.4%	-1.0%	22.9%	1.8%
2015	0.0%	4.5%	-2.3%	2.5%	-0.4%	0.0%	0.9%	-1.0%	-1.5%	6.4%	1.2%	-2.0%	8.4%	-4.0%
2016	0.0%	0.8%	12.2%	4.2%	-2.5%	0.0%	0.7%	0.8%	-0.3%	-0.6%	0.0%	1.1%	16.9%	6.2%
2017	3.3%	0.8%	4.2%	0.9%	2.0%	-0.3%	0.9%	0.2%	1.3%	-0.9%	0.3%	0.1%	13.4%	21.7%
2018	0.9%	-1.8%	0.0%	0.5%	0.0%	-0.3%	1.0%	-1.2%	-1.0%	-0.1%	0.3%	-1.1%	-2.9%	-11.9%
2019	3.4%	-0.2%	-0.4%	0.3%	-0.8%	2.7%	1.1%	-1.3%	-0.1%	0.0%	2.5%	-0.3%	7.0%	23.8%
2020	-0.1%	0.6%	-0.5%	10.0%	4.5%	4.3%	3.7%	4.3%	-2.4%	0.0%			26.5%	-3.1%



## List of recommendations for 2020

---

Ticker	Name	Open date	Close date	Days open	Return
ARKK	ARK Innovation ETF	31.10.2019	25.02.2020	117	22.3%
FDN	DJ Internet Fund	20.11.2019	10.12.2019	20	-0.6%
ECH	MSCI Chile Capped ETF	26.12.2019	24.01.2020	29	-4.5%
IYR	U.S. Real Estate ETF	02.01.2020	26.02.2020	55	3.4%
ASHR	CSI 300 China A-Shares ETF	05.03.2020	13.03.2020	8	-5.0%
XOP	S&P Oil & Gas Exploration & Production ETF	31.03.2020	19.06.2020	80	70.5%
GDXX	MV Gold Miners ETF	09.04.2020	08.06.2020	60	13.2%
FBT	Arca Biotechnology Fund	14.04.2020	03.08.2020	111	18.7%
IYW	US Technology ETF	17.04.2020	11.09.2020	147	27.7%
QQQ	QQQ Trust Series 1	17.04.2020	11.09.2020	147	25.6%
VCR	Vanguard Consumer Discretionary ETF	21.04.2020	15.09.2020	147	46.3%
EWJ	MSCI Japan ETF	22.04.2020	06.07.2020	75	10.8%
EWL	MSCI Switzerland Capped ETF	22.04.2020	25.09.2020	156	11.5%
CQQQ	China Technology ETF	27.04.2020	29.07.2020	93	33.4%

Positions closed or opened during current month are highlighted