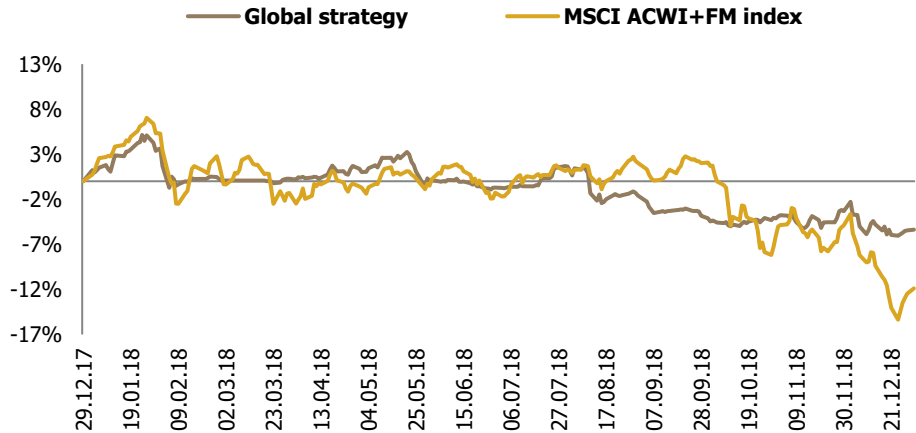


Transparent Knowledge

Global ETFs strategy FY2018 data

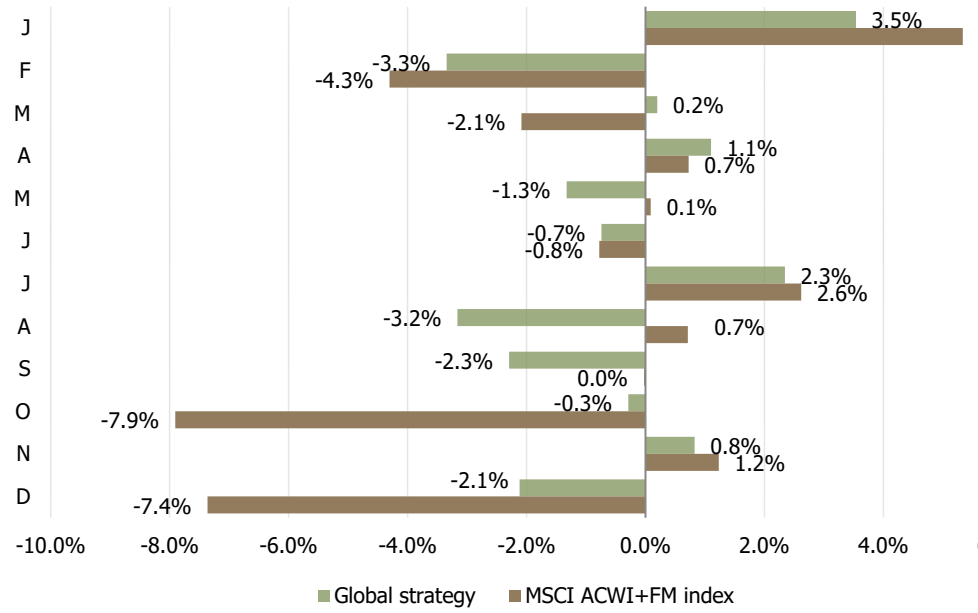
YTD strategy performance vs benchmark



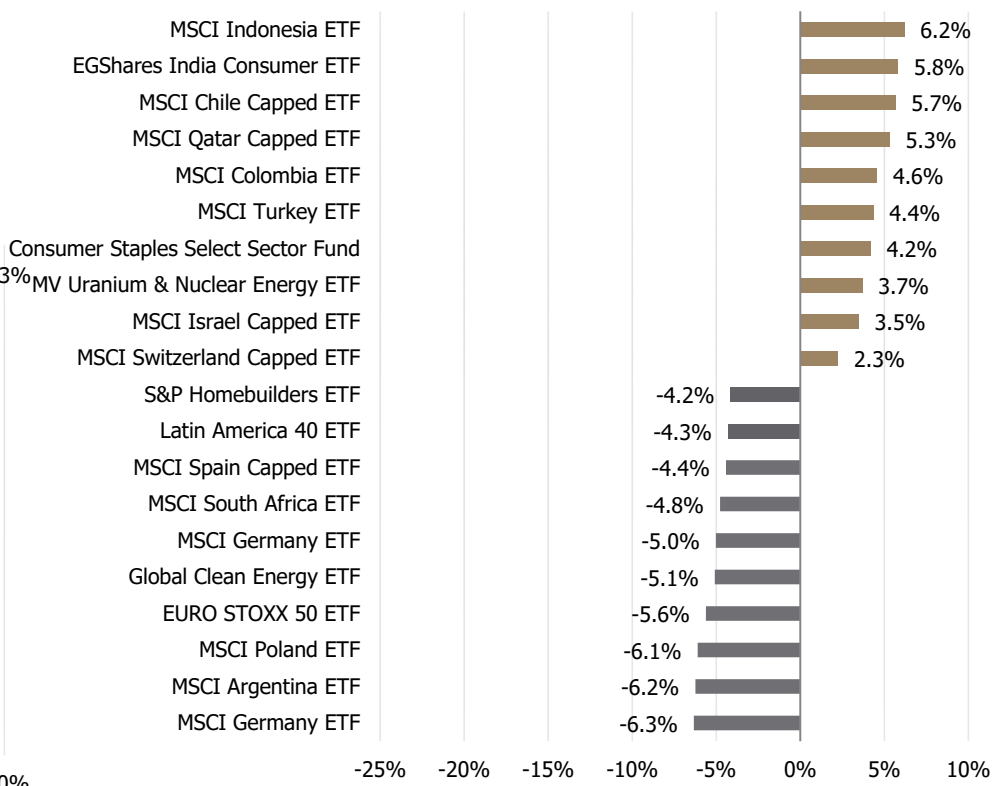
Strategy indicators

	Return	Jensen' α	β	Sharpe ratio	Sortino ratio	Standard deviation (δ)	Downside risk (dd)
Global strategy	-5.37%	-2.23%	0.36	-0.96	-1.04	7.40%	6.83%
MSCI ACWI+FM	-11.90%			-1.11	-1.43	12.24%	9.56%

Monthly performance



10 best & worst investments

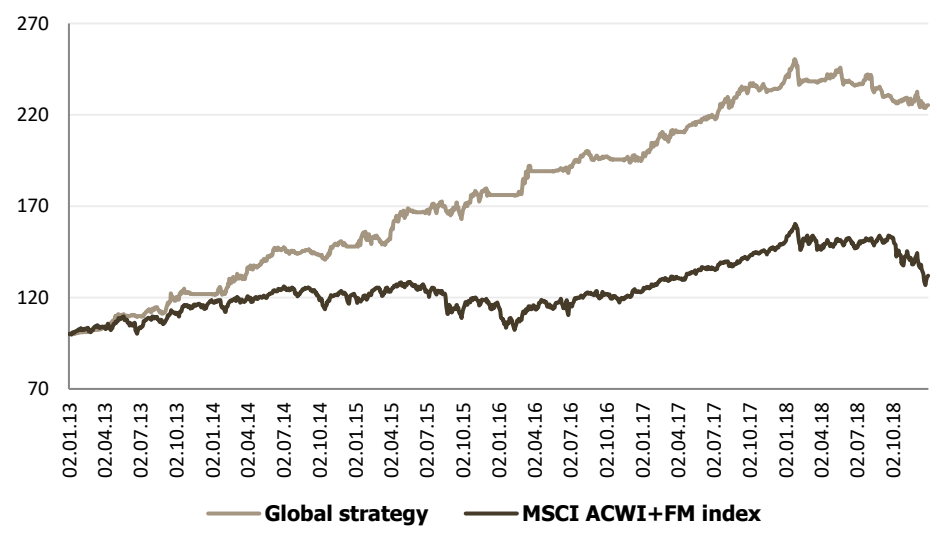


List of recommendations for 2018

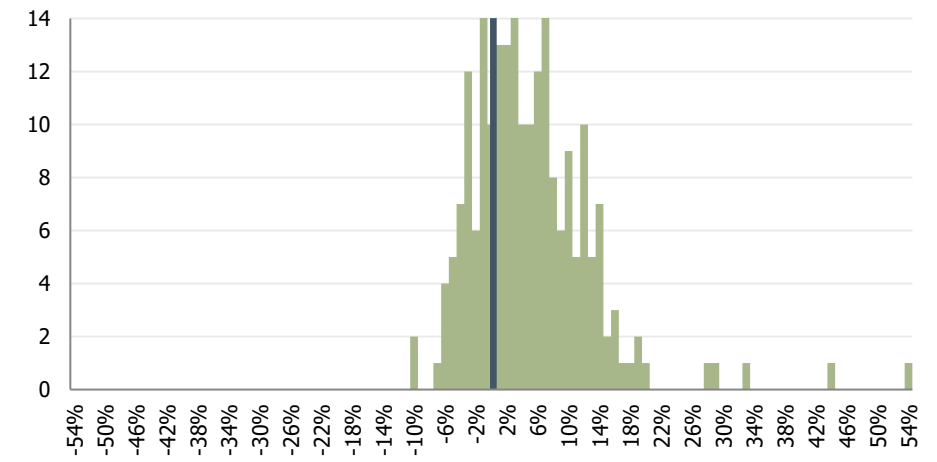
Ticker	Name			Days open	Return
XLP	Consumer Staples Select Sector Fund	15.11.2017	02.02.2018	79	4.2%
QAT	MSCI Qatar Capped ETF	14.12.2017	07.02.2018	55	5.3%
ECH	MSCI Chile Capped ETF	21.12.2017	28.02.2018	69	5.7%
GDXJ	MV Junior Gold Miners ETF	21.12.2017	01.02.2018	42	1.7%
TUR	MSCI Turkey ETF	21.12.2017	12.02.2018	53	4.4%
GXG	MSCI Colombia ETF	21.12.2017	07.02.2018	48	4.6%
FAN	Global Wind Energy ETF	27.12.2017	06.02.2018	41	-0.2%
EWD	MSCI Sweden ETF	09.01.2018	06.02.2018	28	-1.6%
GXF	FTSE Nordic Region ETF	09.01.2018	06.02.2018	28	-2.0%
NLR	MV Uranium & Nuclear Energy ETF	16.03.2018	05.06.2018	81	3.7%
IDU	US Utilities ETF	19.03.2018	11.05.2018	53	0.9%
RWO	Dow Jones Global Real Estate ETF	05.04.2018	21.05.2018	46	0.7%
EWU	MSCI United Kingdom ETF	09.04.2018	31.05.2018	52	1.4%
FEZ	EURO STOXX 50 ETF	12.04.2018	29.05.2018	47	-5.6%
OIH	MV Oil Service ETF	13.04.2018	05.06.2018	53	2.1%
EWD	MSCI Sweden ETF	13.04.2018	30.05.2018	47	-0.5%
EFA	MSCI EAFE ETF	17.04.2018	30.05.2018	43	-1.9%
EWG	MSCI Germany ETF	17.04.2018	29.05.2018	42	-6.3%
EIS	MSCI Israel Capped ETF	15.05.2018	28.06.2018	44	3.5%
XHB	S&P Homebuilders ETF	11.06.2018	26.06.2018	15	-4.2%
IYK	US Consumer Goods ETF	12.06.2018	15.08.2018	64	-0.1%
EWV	MSCI Mexico Capped ETF	09.07.2018	20.08.2018	42	-0.8%
EWL	MSCI Switzerland Capped ETF	19.07.2018	11.09.2018	54	2.3%
GXF	FTSE Nordic Region ETF	19.07.2018	14.08.2018	26	-2.3%
ILF	Latin America 40 ETF	20.07.2018	15.08.2018	26	-4.3%
ARGT	MSCI Argentina ETF	23.07.2018	14.08.2018	22	-6.2%
JETS	US Global Jets ETF	23.07.2018	08.10.2018	77	0.1%
EPOL	MSCI Poland ETF	27.07.2018	15.08.2018	19	-6.1%
EPHE	MSCI Philippines ETF	30.07.2018	17.08.2018	18	-3.2%
DRW	Global ex-US Real Estate Fund	30.08.2018	07.09.2018	8	-3.2%
EEMA	MSCI Emerging Markets Asia ETF	30.08.2018	07.09.2018	8	-3.6%
EFA	MSCI EAFE ETF	30.08.2018	07.09.2018	8	-3.6%
EWG	MSCI Germany ETF	30.08.2018	07.09.2018	8	-5.0%
GNR	S&P Global Natural Resources ETF	30.08.2018	07.09.2018	8	-3.7%
EUFN	MSCI Europe Financials ETF	24.09.2018	03.10.2018	9	-4.1%
EWP	MSCI Spain Capped ETF	25.09.2018	03.10.2018	8	-3.7%
BRF	MV Brazil Small-Cap ETF	08.10.2018	10.12.2018	63	1.4%
EIDO	MSCI Indonesia ETF	06.11.2018	31.12.2018	55	6.2%
EZA	MSCI South Africa ETF	08.11.2018	14.11.2018	6	-4.8%
ICLN	Global Clean Energy ETF	09.11.2018	20.12.2018	41	-5.1%
IYR	U.S. Real Estate ETF	12.11.2018	18.12.2018	36	-3.3%
INCO	EGShares India Consumer ETF	19.11.2018	31.12.2018	42	5.8%
EWH	MSCI Hong Kong ETF	28.11.2018	21.12.2018	23	-3.8%
EWP	MSCI Spain Capped ETF	29.11.2018	10.12.2018	11	-4.4%
EEM	MSCI Emerging Markets ETF	30.11.2018	12.12.2018	12	-1.6%
RING	MSCI Global Gold Miners ETF	12.12.2018	31.12.2018	19	2.1%

Since inception performance

100 USD invested dynamics



Investment returns dispersion



Annual returns

		Return	Jensen' α	β	Sharpe ratio	Sortino ratio	Standard deviation (δ)	Downside risk (dd)
2013	Global strategy	21.89%	12.70%	0.47	2.41	4.12	7.95%	5.98%
	MSCI ACWI+FM	18.59%			1.84	2.32	9.57%	7.57%
2014	Global strategy	21.32%	19.87%	0.56	2.08	3.40	9.01%	5.70%
	MSCI ACWI+FM	1.81%			0.09	0.13	8.88%	6.42%
2015	Global strategy	19.08%	20.68%	0.52	1.52	2.37	11.27%	7.23%
	MSCI ACWI+FM	-4.04%			-0.39	-0.54	12.76%	9.41%
2016	Global strategy	10.65%	8.34%	0.25	1.41	2.24	6.36%	5.30%
	MSCI ACWI+FM	6.21%			0.40	0.51	12.94%	10.20%
2017	Global strategy	22.21%	4.19%	0.83	3.10	3.95	6.84%	5.36%
	MSCI ACWI+FM	21.73%			3.58	5.98	5.79%	3.47%
2018	Global strategy	-5.37%	-2.23%	0.36	-0.96	-1.04	7.40%	6.83%
	MSCI ACWI+FM	-11.90%			-1.11	-1.43	12.24%	9.56%

Strategy risk performance vs benchmark

