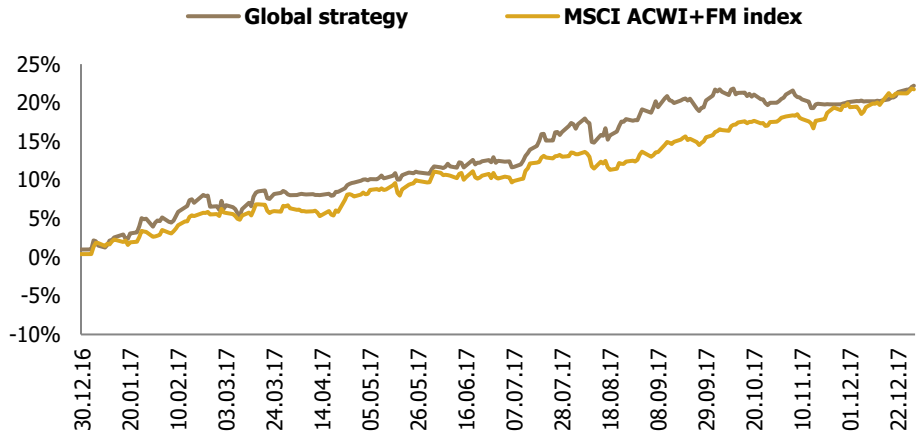


# **Transparent Knowledge**

# Global ETFs strategy FY2017 data

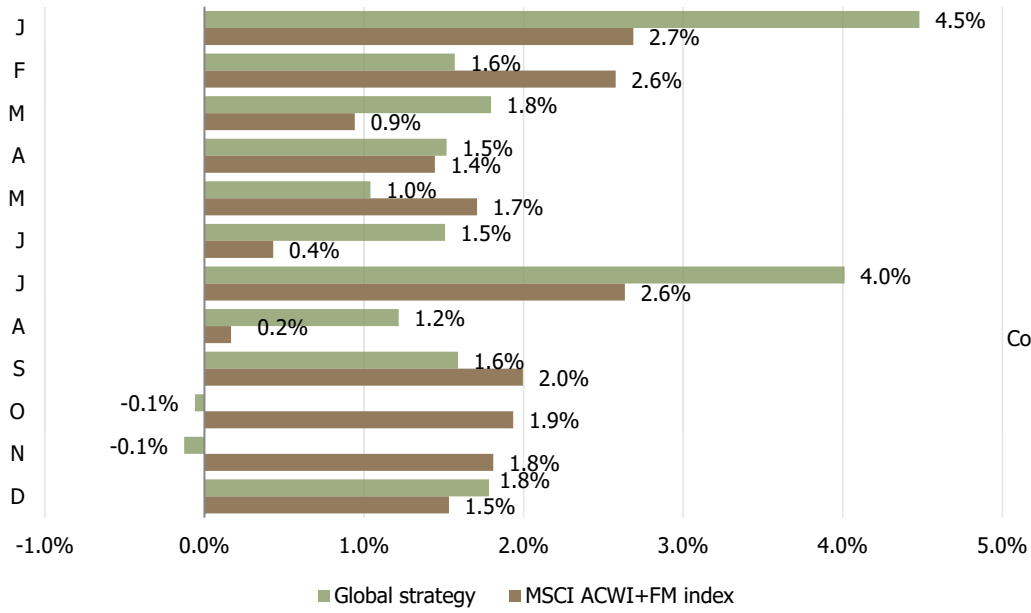
## YTD strategy performance vs benchmark



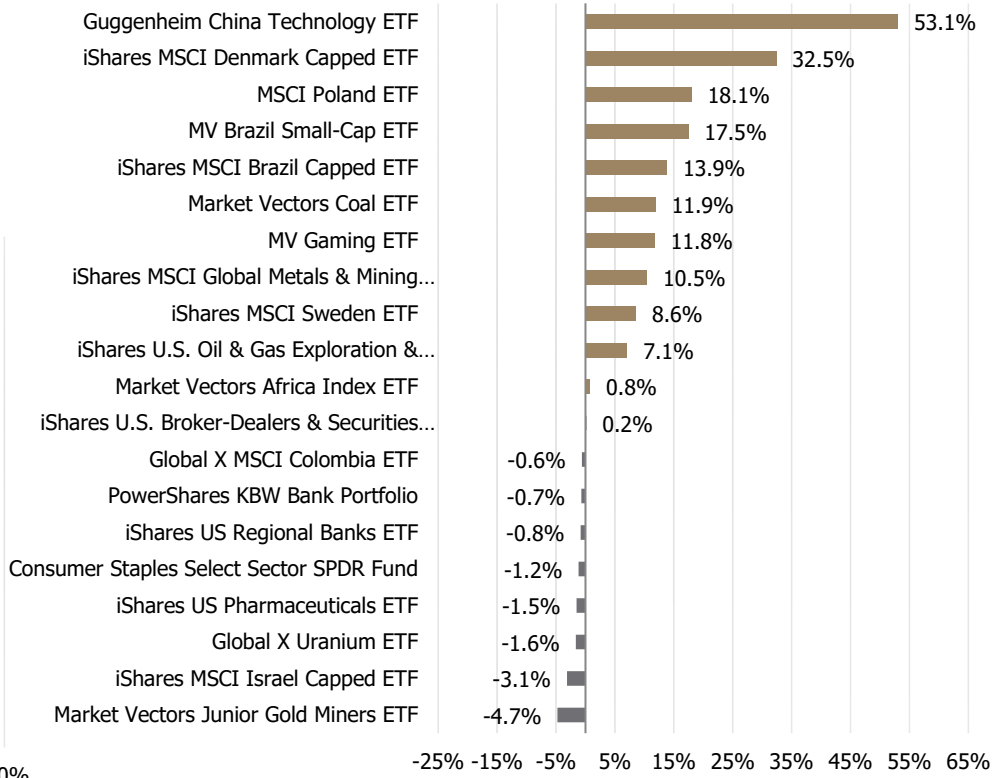
## Strategy indicators

	Return	Jensen' $\alpha$	$\beta$	Sharpe ratio	Sortino ratio	Standard deviation ( $\delta$ )	Downside risk (dd)
<b>Global strategy</b>	22.21%	4.19%	0.83	3.10	3.95	6.84%	5.36%
MSCI ACWI+FM	21.73%			3.58	5.98	5.79%	3.47%

## Monthly performance



## 10 best & worst investments

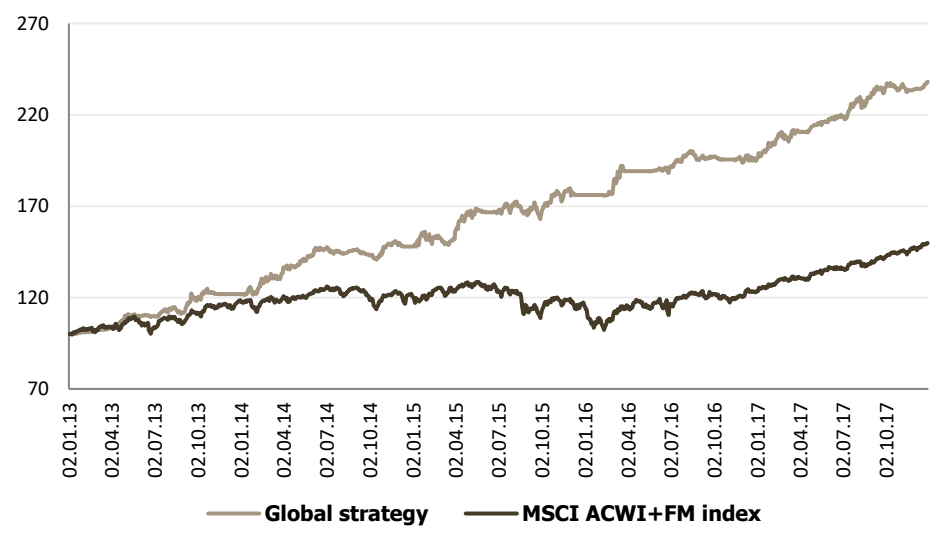


## List of recommendations for 2017

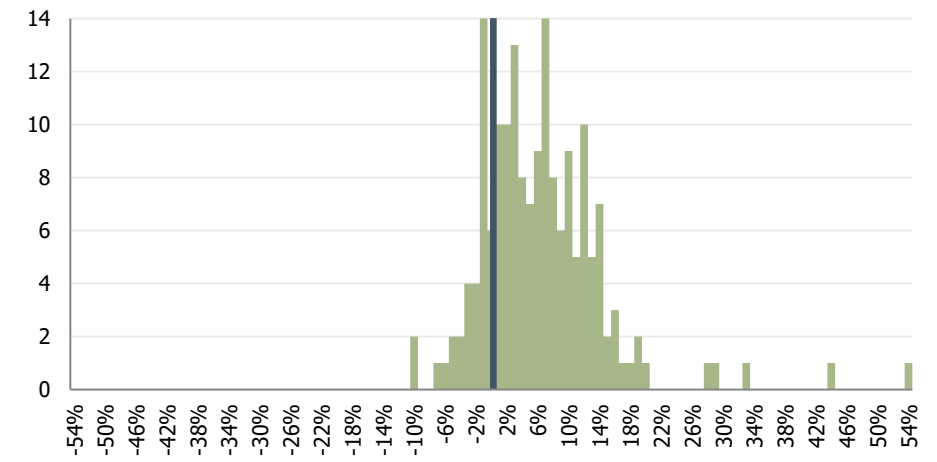
Ticker	Name	Open date	Close / Valuation date	Days open	Return
PSCD	S&P SmallCap Consumer Disc. ETF	14.11.2016	10.01.2017	57	2.4%
XHB	SPDR S&P Homebuilders ETF	16.11.2016	06.01.2017	51	3.0%
IYZ	iShares US Telecommunications ETF	22.11.2016	06.02.2017	76	5.5%
EFNL	iShares MSCI Finland Capped ETF	08.12.2016	28.02.2017	82	3.0%
EPOL	MSCI Poland ETF	08.12.2016	11.04.2017	124	18.1%
EWD	iShares MSCI Sweden ETF	08.12.2016	07.04.2017	120	8.6%
PBW	PS Clean Energy Portfolio	08.12.2016	09.03.2017	91	2.1%
EDEN	iShares MSCI Denmark Capped ETF	29.12.2016	26.10.2017	301	32.5%
BRF	MV Brazil Small-Cap ETF	06.01.2017	24.03.2017	77	17.5%
AFK	Market Vectors Africa Index ETF	09.01.2017	28.02.2017	50	0.8%
CQQQ	Guggenheim China Technology ETF	12.01.2017	30.10.2017	291	53.1%
BJK	MV Gaming ETF	14.02.2017	07.07.2017	143	11.8%
HEWJ	iShares MSCI Japan ETF	01.05.2017	14.08.2017	105	3.0%
KBWB	PowerShares KBW Bank Portfolio	09.06.2017	17.08.2017	69	-0.7%
IAI	iShares U.S. Broker-Dealers&E. ETF	12.06.2017	17.08.2017	66	0.2%
GDXJ	Market Vectors Junior Gold Miners ETF	14.06.2017	07.07.2017	23	-4.7%
KOL	Market Vectors Coal ETF	30.06.2017	19.09.2017	81	11.9%
PICK	MSCI Global Metals & Mining ETF	03.07.2017	26.09.2017	85	10.5%
URA	Global X Uranium ETF	10.07.2017	14.08.2017	35	-1.6%
EWZ	iShares MSCI Brazil Capped ETF	17.07.2017	25.10.2017	100	13.9%
XLP	Consumer Staples SPDR Fund	17.08.2017	29.08.2017	12	-1.2%
ARGT	Global X MSCI Argentina ETF	01.09.2017	16.11.2017	76	6.2%
IHE	iShares US Pharmaceuticals ETF	06.09.2017	26.10.2017	50	-1.5%
IEO	iShares U.S. Oil & Gas E&P ETF	19.09.2017	20.11.2017	62	7.1%
IAT	iShares US Regional Banks ETF	22.09.2017	10.11.2017	49	-0.8%
EIS	iShares MSCI Israel Capped ETF	02.10.2017	27.10.2017	25	-3.1%
XLP	Consumer Staples SPDR Fund	15.11.2017	29.12.2017	44	5.0%
QAT	iShares MSCI Qatar Capped ETF	14.12.2017	29.12.2017	15	5.4%
ECH	iShares MSCI Chile Capped ETF	21.12.2017	29.12.2017	8	2.6%
GDXJ	Market Vectors Junior Gold Miners ETF	21.12.2017	29.12.2017	8	3.2%
TUR	iShares MSCI Turkey ETF	21.12.2017	29.12.2017	8	4.1%
GXG	Global X MSCI Colombia ETF	21.12.2017	29.12.2017	8	-0.6%
FAN	First Trust Global Wind Energy ETF	27.12.2017	29.12.2017	2	1.5%

# Since inception performance

## 100 USD invested dynamics



## Investment returns dispersion



## Annual returns

		Return	Jensen' $\alpha$	$\beta$	Sharpe ratio	Sortino ratio	Standard deviation ( $\delta$ )	Downside risk (dd)
2013	Global strategy	21.89%	12.70%	0.47	2.41	4.12	7.95%	5.98%
	MSCI ACWI+FM	18.59%			1.84	2.32	9.57%	7.57%
2014	Global strategy	21.32%	19.87%	0.56	2.08	3.40	9.01%	5.70%
	MSCI ACWI+FM	1.81%			0.09	0.13	8.88%	6.42%
2015	Global strategy	19.08%	20.68%	0.52	1.52	2.37	11.27%	7.23%
	MSCI ACWI+FM	-4.04%			-0.39	-0.54	12.76%	9.41%
2016	Global strategy	10.65%	8.34%	0.25	1.41	2.24	6.36%	5.30%
	MSCI ACWI+FM	6.21%			0.40	0.51	12.94%	10.20%
2017	Global strategy	22.21%	4.19%	0.83	3.10	3.95	6.84%	5.36%
	MSCI ACWI+FM	21.73%			3.58	5.98	5.79%	3.47%

## Strategy risk performance vs benchmark

